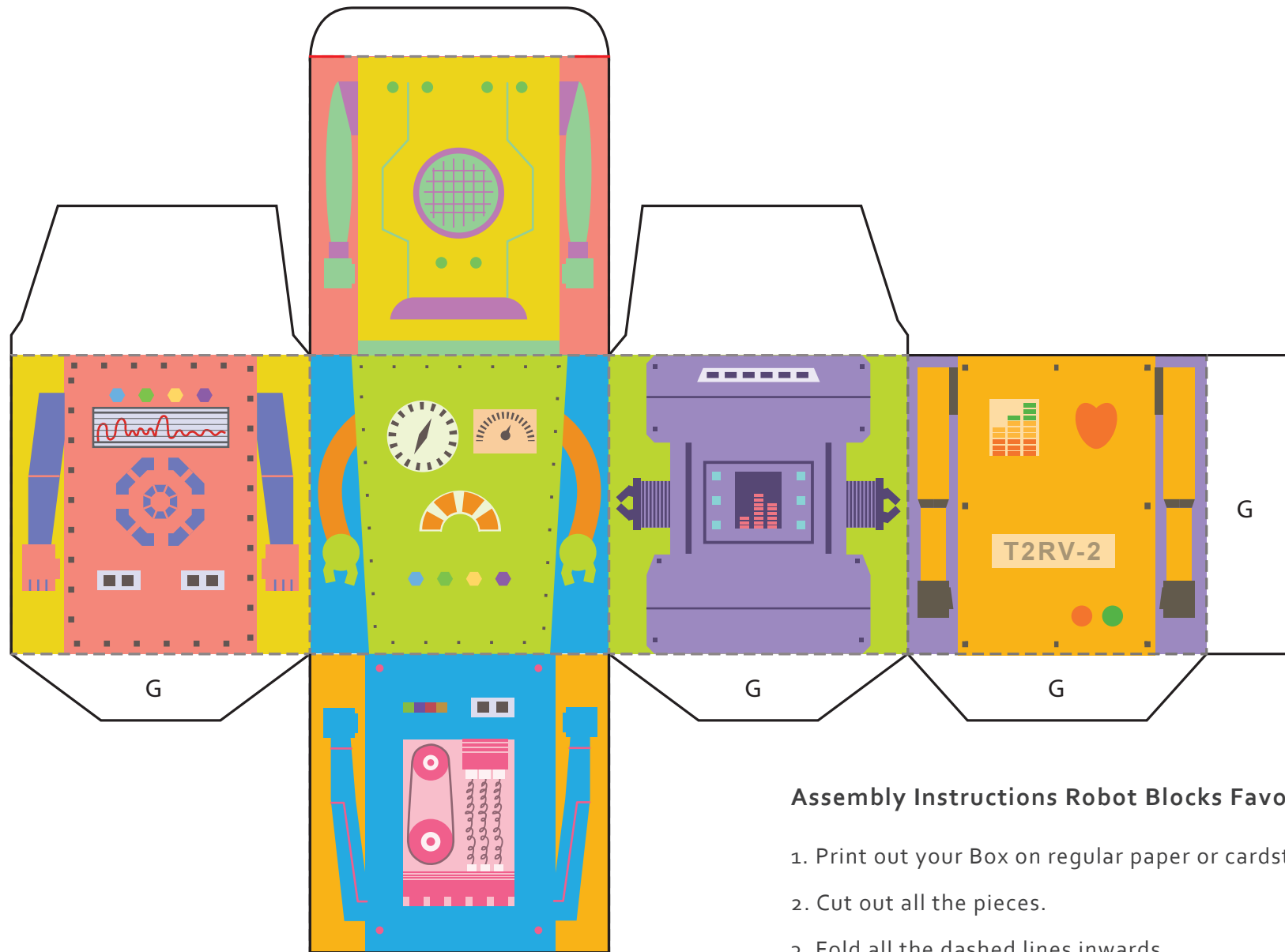


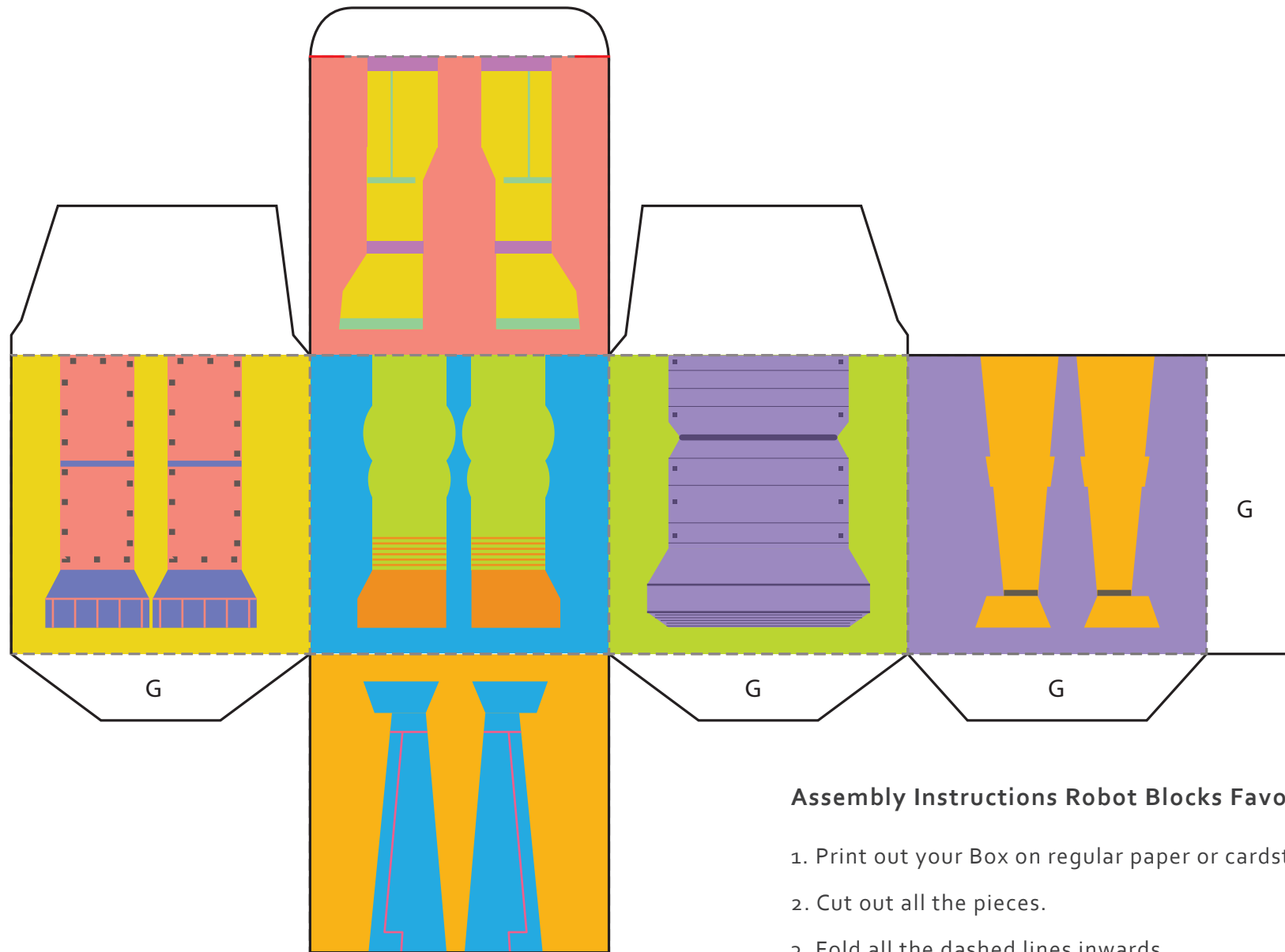
Assembly Instructions Robot Blocks Favor Box

1. Print out your Box on regular paper or cardstock.
2. Cut out all the pieces.
3. Fold all the dashed lines inwards.
4. Put glue on all the tabs marked with a G.
5. Make a cut along the red lines on the lid. Assemble the box.



Assembly Instructions Robot Blocks Favor Box

1. Print out your Box on regular paper or cardstock.
2. Cut out all the pieces.
3. Fold all the dashed lines inwards.
4. Put glue on all the tabs marked with a G.
5. Make a cut along the red lines on the lid. Assemble the box.



Assembly Instructions Robot Blocks Favor Box

1. Print out your Box on regular paper or cardstock.
2. Cut out all the pieces.
3. Fold all the dashed lines inwards.
4. Put glue on all the tabs marked with a G.
5. Make a cut along the red lines on the lid. Assemble the box.