



PAPERCRAFTS | PRINTS | AND MORE

CHRISTMAS TRAIN

Thank you for downloading this resource!

PAPER CHOICE AND RESOURCES

Although this resource may print on any type of paper thickness I would recommend a heavyweight white matte photo paper or cardstock. The resource is formatted to papersize A4 (21.0 x 29.7cm or 8.27 x 11.69) but can also print perfectly on U.S. Letter (8.5 x 11 inches). Apart from the paper you'll also need 4 fasteners for each puppet and some string (optional).

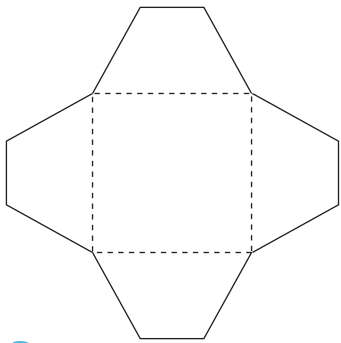
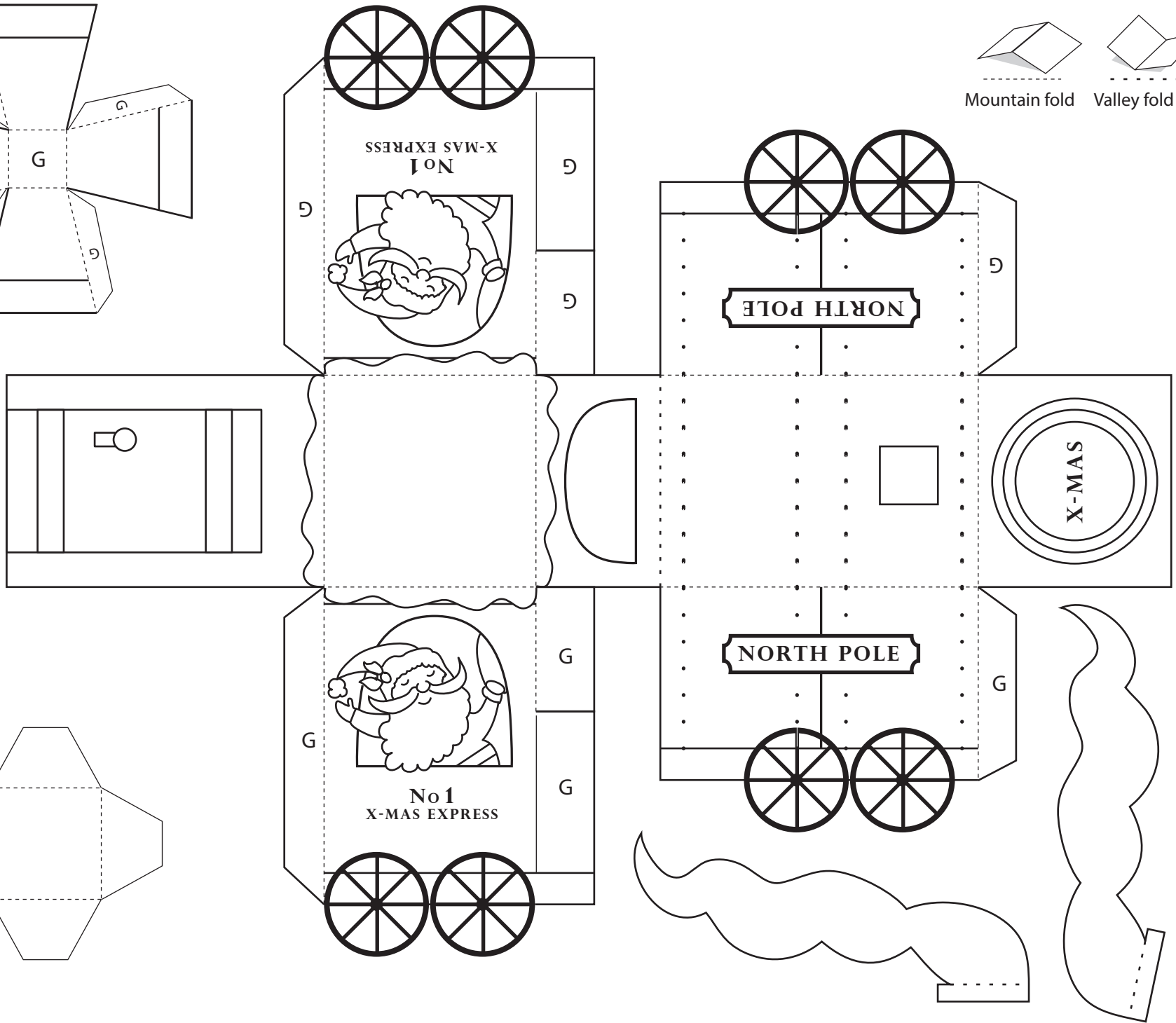
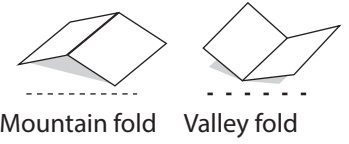
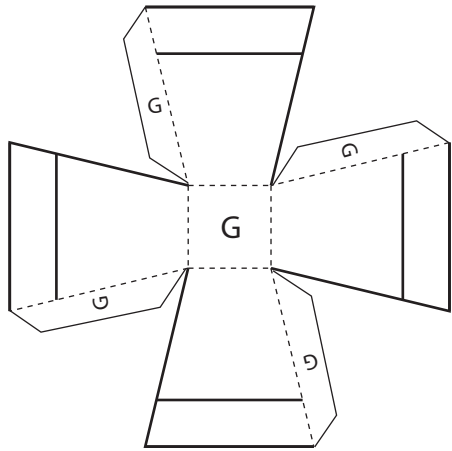
INSTRUCTIONS

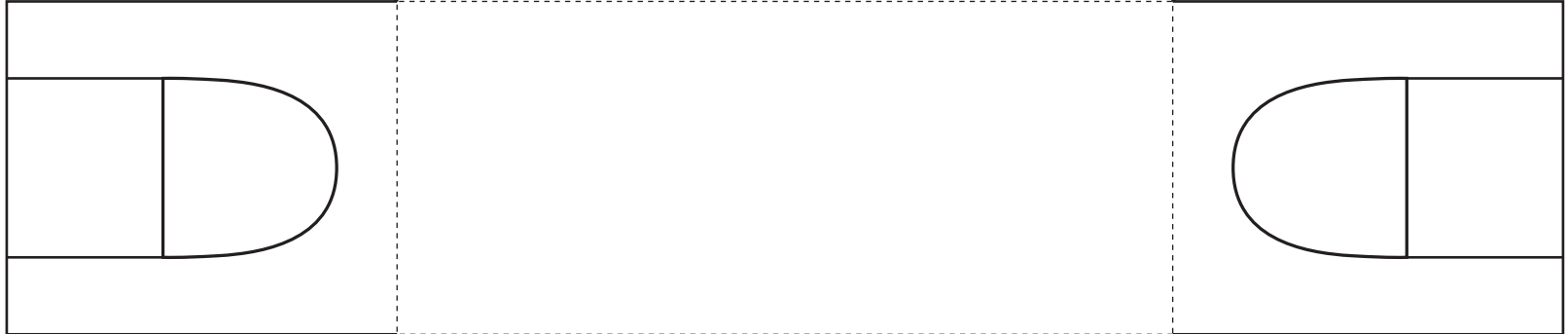
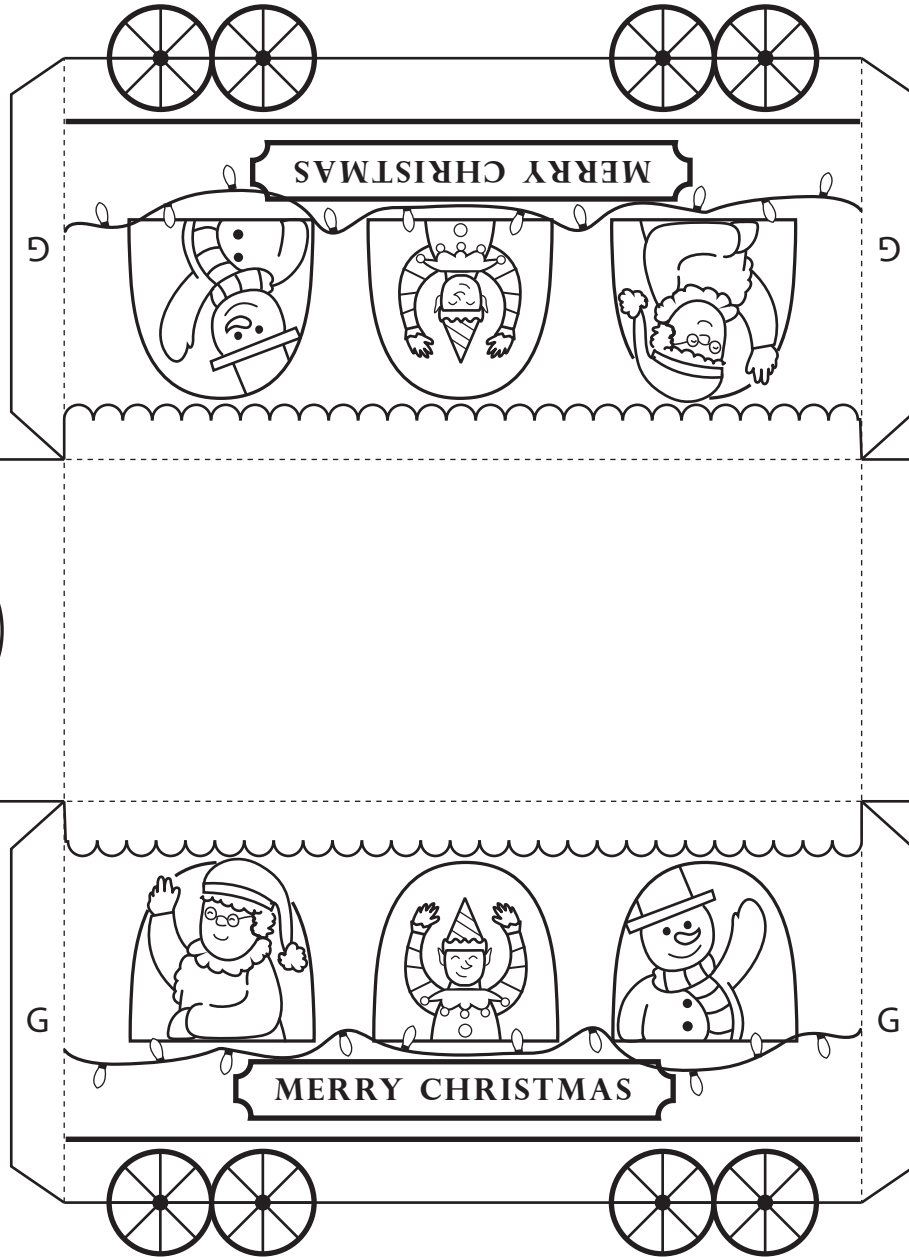
1. Print the resource. Use the free software Adobe Reader. Download (or update your earlier version) for FREE quickly and easily here: <http://adobe.com/go/reader>.
2. Cut out the individual parts the train. Fold along the dashed lines (mountain fold or valley fold deping on the typ of dashed lines).
3. Put some glue on the tabs marked with a G. Glue the tabs to their corresponding part.
4. Lastly if you wish to attach the train carts and engine, Glue the connectors on the short sides of the the one of the carts.

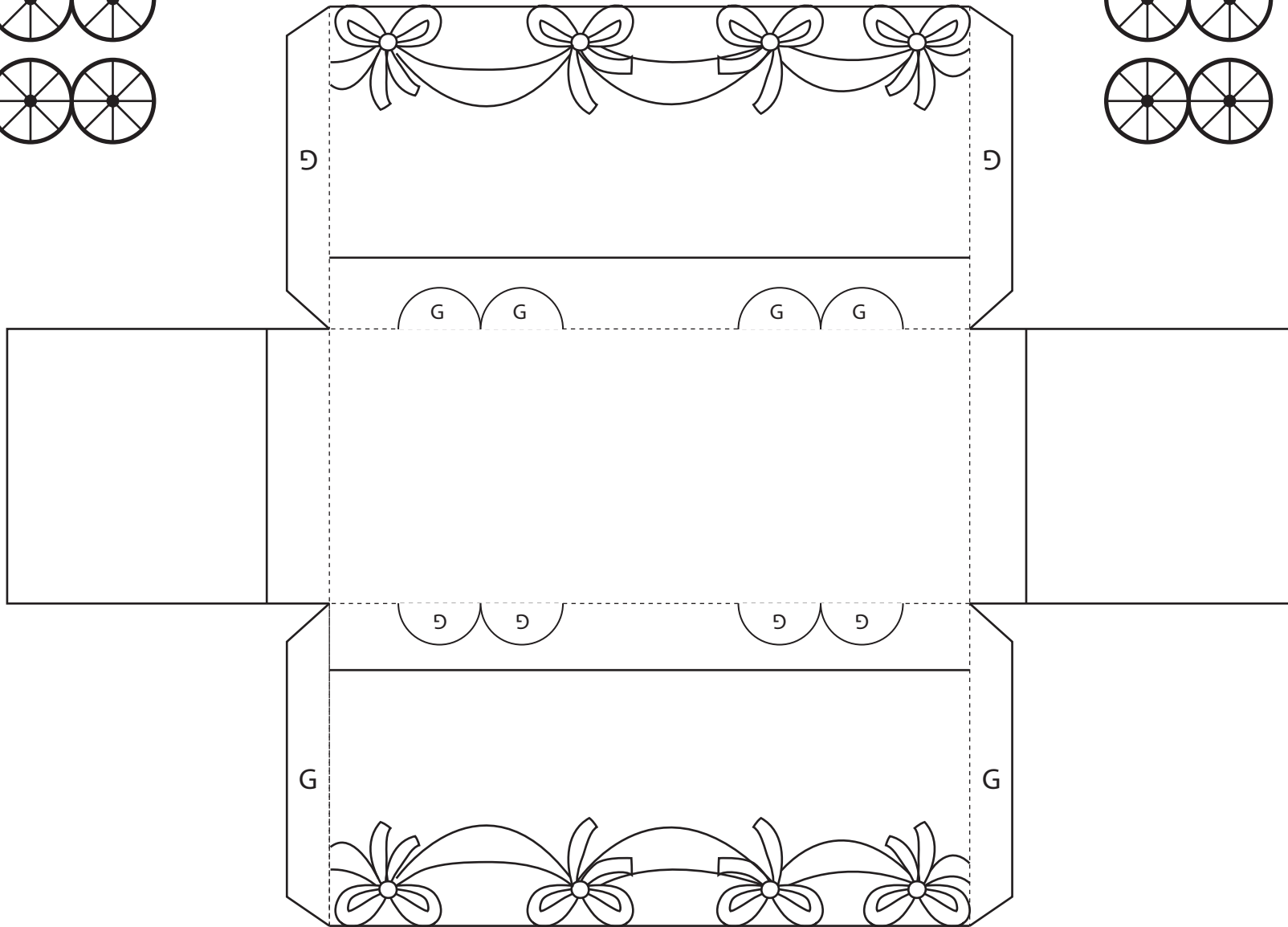
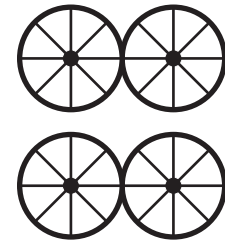
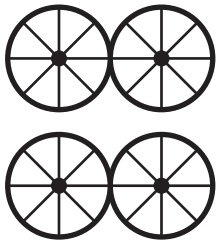
Have questions? Check out my FAQ at <http://www.mgulin.com/help/>

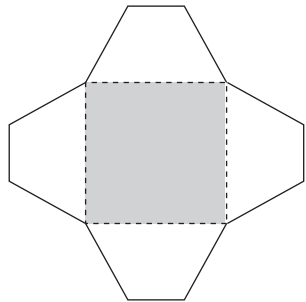
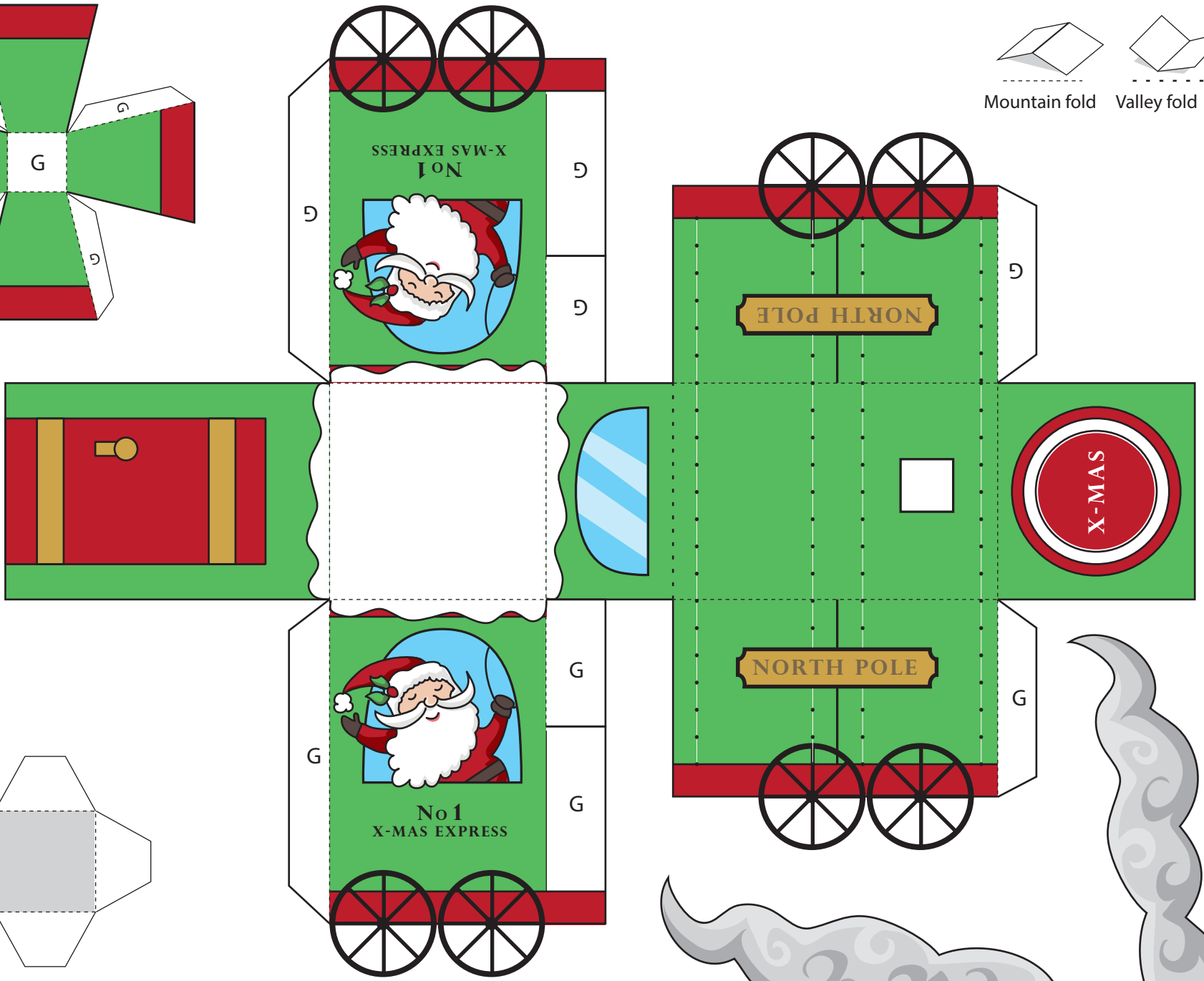
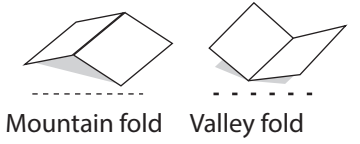
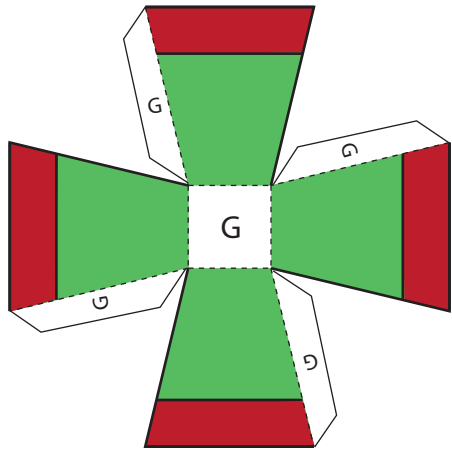
TERMS OF USE:

The resource provided here is for YOUR PERSONAL USE only. Feel free to print it as many times as you like. Please do not forward the resource to your friends or family - refer them to my website. Commercial use and mass production are not allowed. You cannot resell this file or the finished products. For further information of the terms of use please go to: <http://www.mgulin.com/terms-of-use/>









connectors



connectors

